

Association News

WIC Week Day 5: Establish Balance & Avoid Burnout- Invest in You!

Establish Balance & Avoid Burnout:

Invest in You!

Join us as we get real about burnout, how it manifests, originates in systems and how we can navigate challenging conversations by saying no, setting boundaries, investing in ourselves, and making work/life balance a priority.



[Register now.](#)

Marketing Committee: NAWIC Events Webinar



Marketing Committee:
**NAWIC EVENTS
WEBINAR**

Marketing your events is the best way to improve attendance and even gain members. Find out tips, tricks, and best practices with the NAWIC Marketing Committee.

**Feb. 7
12 p.m. CST**

[Learn More...](#)

Project Excellence Awards Now Open

2022 Civil Heavy Highway Winner: Branscome Inc.



Project Excellence Awards

Applications are now open for the NAWIC Project Excellence Awards! These awards celebrate the best construction projects from the past year. Companies from all over the country submit their work to be considered for the honor. The application window closes April 15. Email kristenj@nawic.org for more information.

Categories:

- **Civil Heavy Highway:** Large, public infrastructure projects
- **Commercial:** Projects for the sole motive of gaining profit
- **Institutional:** Projects related to healthcare, education, recreation or public works
- **Residential:** Individual and multi-family dwellings



[Learn More...](#)

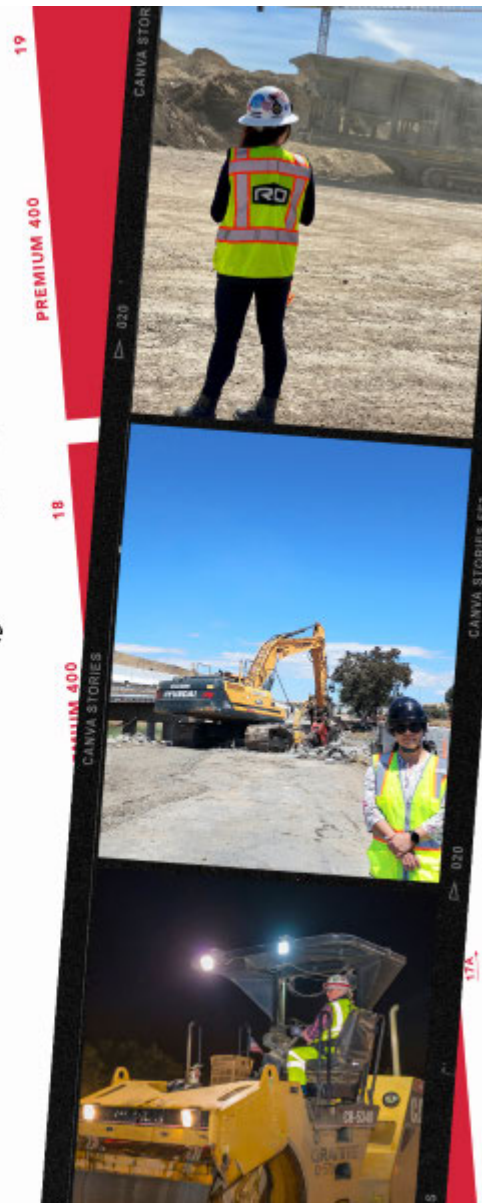
Kick off WIC Week with NAWIC!



Kick Off WIC Week

Get the week started with NAWIC! Hear from National President Lauline Mitchell and WIC Week Chair Virnetta Woodbury, get to know others celebrating the week, and more. Everyone is welcome to join!

Sat., March 4
5 p.m. CDT
Register at nawic.org



[Learn More...](#)

PD&E Committee: Build a Better Business Story



Learn how to attract & grow audience connection through story with this simple 5-step method for crafting a captivating story.

**Feb. 14
11 a.m. CST
nawic.org**


[Learn More...](#)

Need to renew your membership? Here's how!

Our renewal system has changed in recent months, so if it's time for you or someone else in your chapter to renew your membership, here's how!

- If you are within thirty days of your renewal date, you can login and renew your membership at nawic.org!
- If you are over thirty days past your renewal date, you will need to contact Membership Manager Lori Wagner to renew your membership. You can contact her via email at loriw@nawic.org or by phone at 817-877-5551 x100.

Coffee & Questions with the NAWIC Staff

A promotional graphic for a monthly session. It features a red background with a white tilted box containing the text "COFFEE & QUESTIONS". To the right, text reads "An informal monthly session where you can ask NAWIC staff your questions". The central image shows two white coffee cups on a light-colored wooden table, with hands holding them. A thumbs-up icon is on the left, and a pencil icon is on the right. At the bottom, it says "Every first Tuesday of the month at 12 p.m. CST".

COFFEE & QUESTIONS

An informal monthly session where you can ask NAWIC staff your questions

Every first Tuesday of the month at 12 p.m. CST

[Register now.](#)

Join us at CONEXPO-CON/AGG 2023!

The logo for CONEXPO-CON/AGG 2023. It features the tagline "TAKING CONSTRUCTION TO THE NEXT LEVEL." in a bold, sans-serif font. Below this, the dates "MARCH 14-18 / 2023" and location "LAS VEGAS / NEVADA" are listed. At the bottom, there is a logo consisting of three orange chevrons pointing right, followed by the text "CONEXPO CON / AGG" and a red button with the text "JOIN US".

**TAKING CONSTRUCTION
TO THE NEXT LEVEL.**

MARCH 14-18 / 2023 / LAS VEGAS / NEVADA

**CONEXPO
CON / AGG** **JOIN US**

1,800 equipment manufacturers. Hundreds of educational sessions from leaders in the field. Thousands of your peers. It's a place to meet, to learn, to talk, to compare, and to see the technology and equipment that's going to transform your business. [North America's Largest Construction Trade Show | CONEXPO CON/AGG \(conexpoconagg.com\)](#)

Education / Training

The Coaching Corner with Michael Riegel: EQ Takes the Lead

The Coaching Corner
with Micheal Riegel

EQ Takes the Lead



EQ or emotional intelligence is really just an ability to recognize and understand emotions while integrating that understanding to make decisions, solve problems, and communicate with others. In thinking about your job, do you make decisions, solve problems, and communicate with others? The vast majority of us probably answer yes to all three. Yet, many are averse to acknowledge the emotional component of performance and success.

[Read more...](#)

NAWIC Benefits Spotlight

Free tickets to the leading construction, design & real estate show in the tri-state area!



[Get your tickets.](#)

Industry Update

WIC Week Shines Spotlight On Generations of Women in Construction

It is common for sons to follow in their fathers' footsteps, especially in family-owned trade or contracting businesses. What is not as well known is that many women enter construction the same way. Today, however, women are increasingly joining the industry through ties from their mothers, and sometimes, even their grandmothers.

[Learn More...](#)

2022 was a bad year for trench deaths. This year could be worse.

One of construction's most preventable hazards has already taken its toll in the first months of OSHA's fiscal year.

[Learn More...](#)

GCs are often excluded from wage theft liability. That may change.

The federal government is considering more labor-friendly rules, as worker groups push for joint employer wage theft laws.

[Learn More...](#)

Calendar

7

Feb 2023

Marketing Committee: NAWIC Events Webinar

[Learn More...](#)

7

Feb 2023

Coffee & Questions with the NAWIC Staff

[Learn More...](#)

14

Feb 2023

PD&E Committee: Build a Better Business Story

[Learn More...](#)

14

Feb 2023

Chapter Form E 990 Due

[Learn More...](#)

2

Mar 2023

WIC Week: Tradeswomen Panel

[Learn More...](#)

4

Mar 2023

WIC Week Kick Off

[Learn More...](#)

5

Mar 2023

Women in Construction Week

[Learn More...](#)

6

Mar 2023

DE&I Panel: Hot Topic Discussion with Leading Women in Construction

[Learn More...](#)

8

Mar 2023

New York Build 2023

[Learn More...](#)

9

Mar 2023

WIC Week: Establish Balance & Avoid Burnout – Invest in YOU!

[Learn More...](#)

10

Mar 2023

WIC Week: Importance of Allyship for Women in Construction: A Community Engagement Panel

[Learn More...](#)

11

Mar 2023

WIC Week Toast & Recap

[Learn More...](#)

14

Mar 2023

CONEXPO CON/AGG

[Learn More...](#)

The National Association of Women in Construction

327 S. Adams St. - Fort Worth, TX 76104

817-877-5551 or 800-552-3506

nawic@nawic.org

